

The aerated SBR small
wastewater treatment plant
for PE and concrete tanks

AQUAPUR

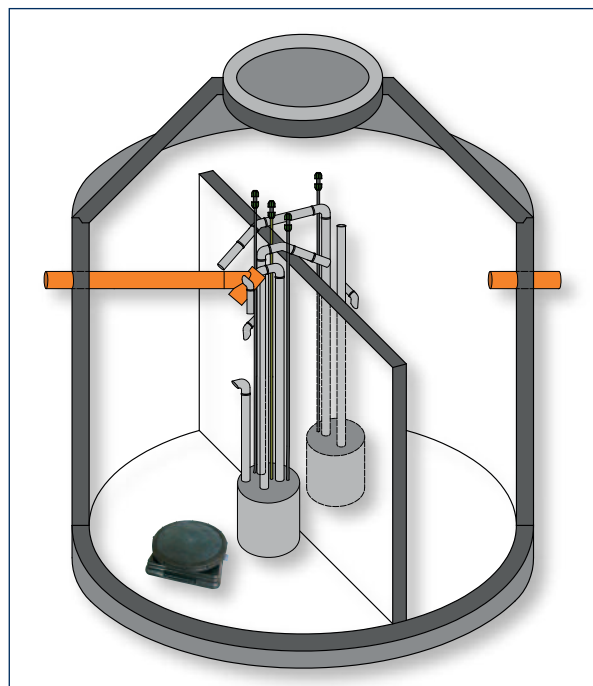
top-level wastewater treatment technology



AquaPur-PE polyethylene tank with preinstalled SBR plant

What is SBR-technology?

The **AquaPur** system is a biological small-scale sewage treatment system in accordance with the tried and tested principle of SBR technology (Sequencing Batch Reactor). The treatment is completed in only six hours. SBR-technology means that the inflowing wastewater (influent) is treated in batches. The plants are fitted with an emergency overflow. Aeration is achieved by an aeration pump which creates an even level of compressed air. The aeration pump and control unit technology are safely housed away from the wastewater in a cabinet or on a console. Hoses from the switch cabinet to the small scale sewage treatment system supply the individual elements with air. The control unit is ready to plug in i.e. all you need for the installation is a



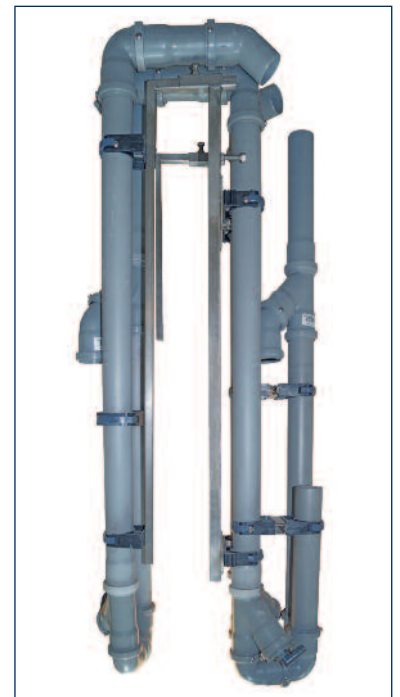
AquaPur: concrete boot version

230 volt socket. Simply plug in and off it goes! The plant runs automatically. All parameters are pre-set.

Guaranteed easy!

Installation of the plant is very easy and quick. All components are prefabricated and the individual parts just need to be connected up. Removal of the control unit from the tank is easy. With the PE tanks it is pre-fitted up-to-date.

The **AquaPur** SBR plant is a fully biological sewage system for domestic wastewater for 4 to 50 population equivalent (p.e.), developed and approved in accordance with the latest guidelines of the European Standard EN 12566, part 3. **AquaPur** can be installed in concrete and PE tanks. Plant sizes up to 1,000 p.e. are possible.

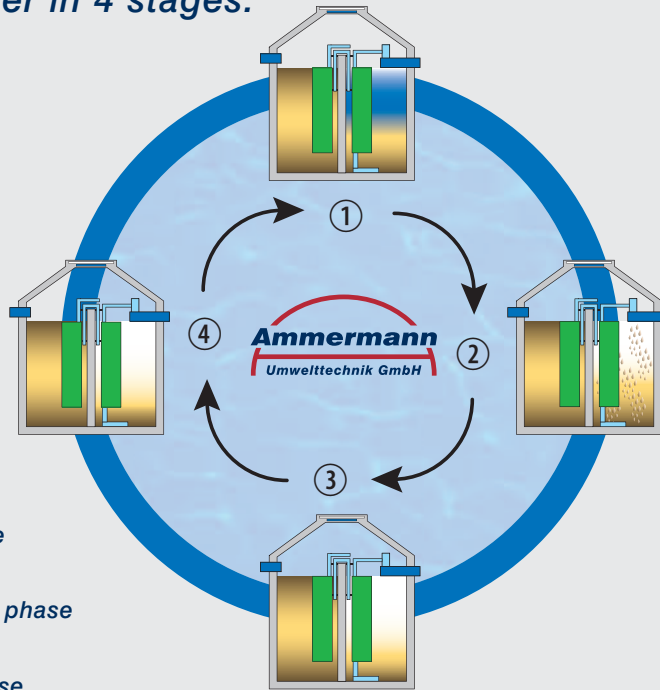


AquaPur with overhang frame



Energy saving pump and control unit
with the latest stepper motor technology

Clear water in 4 stages:



Stage 1:
Feeding phase

Stage 2:
Aeration phase

Stage 3:
Sedimentation phase

Stage 4:
Extraction phase

Stage 1: Feeding phase

The wastewater in the pre-treatment is led into the SBR reactor (activator). It is led out at a pre-set height in the sludge-slide in limited quantities. An air lift pump is used for this draw-off.

Stage 2: Aeration phase

In this phase the wastewater is aerated in the activation chamber. The biology is optimally supplied with oxygen and perfectly mixed. The disc or pipe diffusers on the bottom of the chamber are used for the aeration.

Stage 3: Sedimentation phase

In this stage neither aeration nor feeding takes place. During the sedimentation phase the activated sludge separates from the clear water. A layer of sludge forms on the bottom of the chamber whilst a clear water zone forms in the upper area.

Stage 4: Extraction phase

The biologically treated water is led from the upper area of the chamber into a ditch, soak away or pond. The sludge on the chamber floor is forwarded back to pre-treatment. Air-lift pumps (Mammoth pumps) are used for the extraction without any pumps being located in the water.

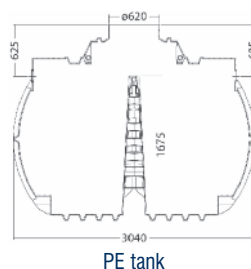
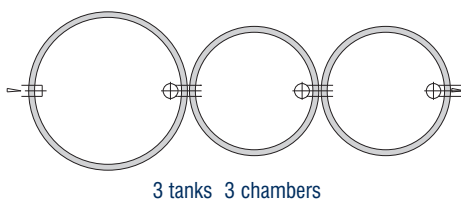
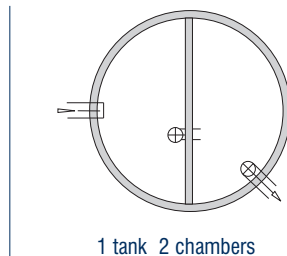
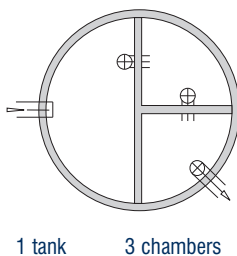
AQUAPUR

Top level wastewater treatment technology

- automatic holiday and economy mode
- problem free new installation and refits possible
- no excavator work necessary for refitting
- no sensitive pumps in the water
- no electrical components in the water
- the latest, most -up- to-date plant technology
- fast and simple installation, removable at any time
- outstanding cleaning performance
- tested and certified plants
- made in Germany
- low power consumption
- low follow-up costs
- model completely ready for installation in PE tanks



Examples of use:



Other variants are possible. Installation is possible in almost all types of small sewage systems



Am Dobben 4 · 26639 Wiesmoor · Germany
Telefon: + 49 (0) 49 44 / 60 60
Telefax: + 49 (0) 49 44 / 60 61
eMail: info@ammermann-gmbh.de
Internet: www.ammermann-gmbh.de

Distribution partner:

More infos: www.ammermann-gmbh.de